



PACKAGED FIRE PUMPING SYSTEMS

SERIES FPS-7000



**PREFABRICATED &
FACTORY TESTED**



**3rd PARTY
CERTIFIED -
ETL/C-ETL LISTED
SYSTEMS**



**ASME SECTION 9
WELDING**

**SINGLE SOURCE
RESPONSIBILITY**



**UL/FM APPROVED
COMPONENTS**



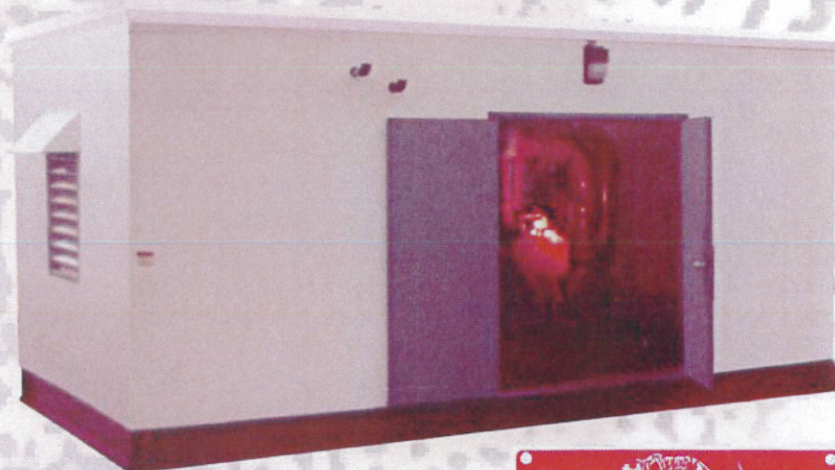
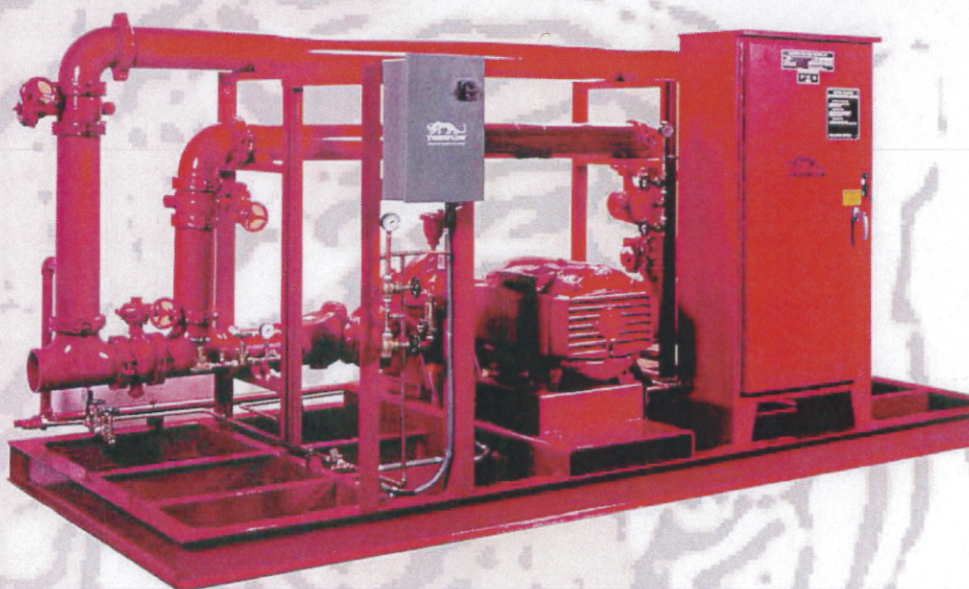
**NFPA PAMPHLET
20 FULL
COMPLIANCE**



**NFPA 70 (NEC)
NAT'L ELECT. CODE
COMPLIANCE**



**ENVIRONMENTAL
ENCLOSURE or
SKID MOUNTED**



SERIES FPS-7000 - Cost-effective engineered fire protection systems for commercial, institutional, municipal and industrial applications.

Packaged Fire Protection Systems You Can Count On....

Standard Features

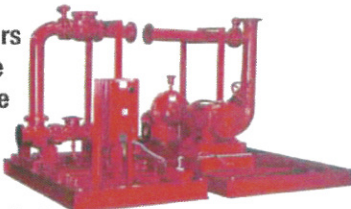
3rd Party ETL/C-ETL Labeled Systems
ASME Section 9 Certified Welding
UL Listed/FM Approved Components
NFPA 20 & NEC 70 Compliance

Drivers

- Electric Motors
- Diesel Engine
- Steam Turbine

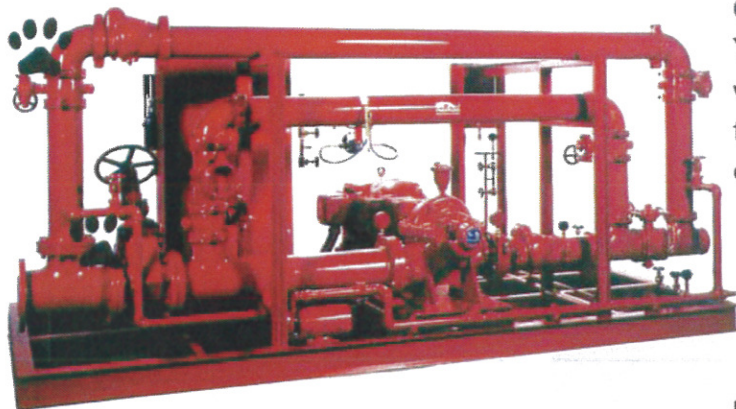
Pumps

- End Suction
- In-line
- Horizontal Split Case
- Vertical Turbine



Prefabricated Skid Mounted Units
Prefabricated Units with Environmental Enclosures

Factory Tested
Single Source Responsibility
Start-up & Field Training



TIGERFLOW, Your expert source for engineered fire protection systems...

TIGERFLOW FIRE PROTECTION SYSTEMS provide critical advantages for system owners, designers and contractors. The complete **TIGERFLOW** system is factory built, tested and ETL/C-ETL third-party certified before shipment. That means the unit arrives on site meeting and/or exceeding all relevant industry standards, including NEC and NFPA guidelines. Liability and performance risks are eliminated. System designers appreciate the time savings and **TIGERFLOW** expertise built into each project. Coordinated deliveries of third party certified systems make contractor performance penalties and delays inherent in site-built/site-certified systems a thing of the past.

Our promise to you...

Your **TIGERFLOW** factory engineered system will arrive ready to go and operate reliably to the required specifications, with the simplest of site installation.

REPRESENTED BY:



TIGERFLOW®

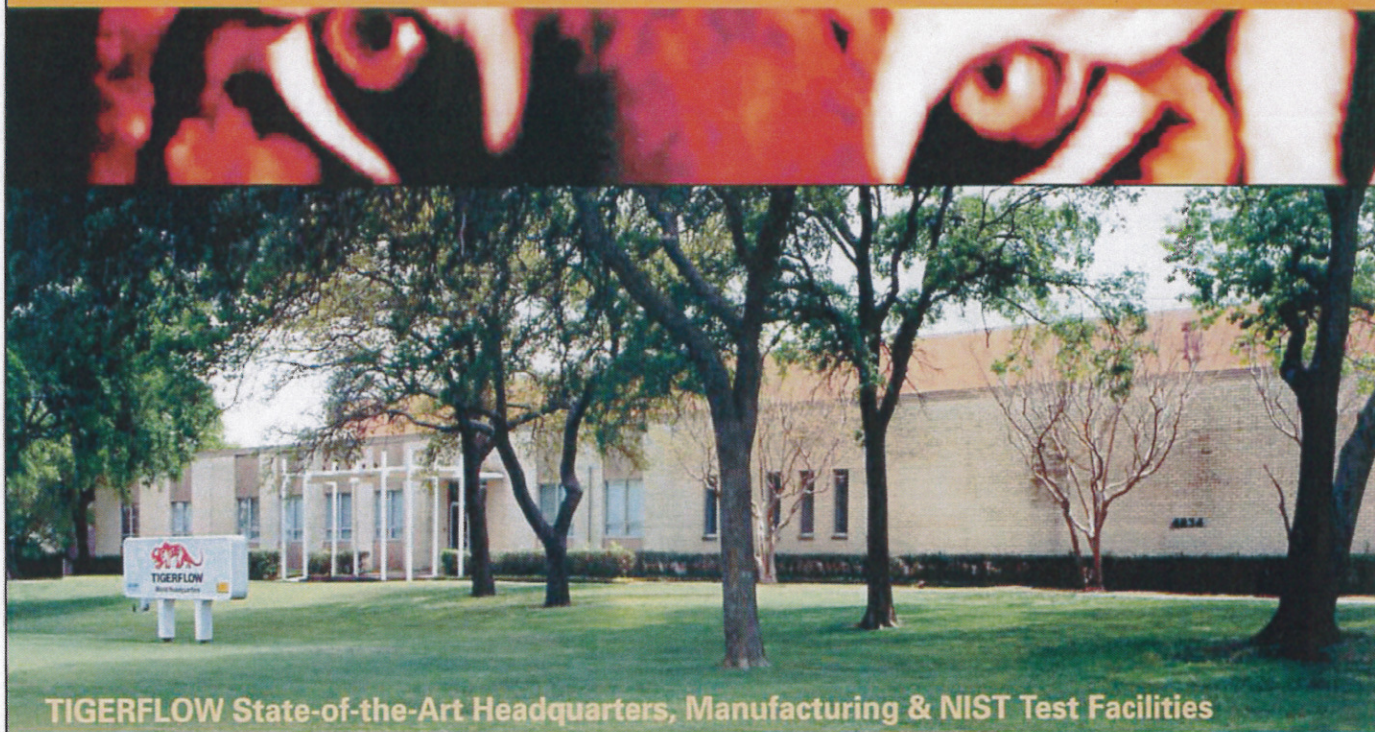
Engineered Systems to the World

4034 Mint Way • Dallas, TX 75237

(800) 783-6756

Tel: (214) 337-8780 • Fax: (214) 333-2742

www.TIGERFLOW.com • E-mail: Sales@TIGERFLOW.com



TIGERFLOW State-of-the-Art Headquarters, Manufacturing & NIST Test Facilities

Engineered Packaged Pump Systems Since 1985

TOTAL THIRD PARTY SYSTEM CERTIFICATION complying with OSHA & Federal Regulations 29CFR1910.303, 29CFR1910.399, NFPA Pamphlet #70 (National Electric Code) article 90-7

- UL/ C-UL listed packaged pumping system label "QCZJ"
- ETL/ C-ETL listed packaged fire pump systems
- City of LA Approval Code
- City of Chicago Standards
- CMR 248 Massachusetts Plumbing Code Approval
- State of Ohio Industrialized Buildings Authorization
- State of Washington, Dept. of Labor & Industries Approval
- UL/C-UL 508/918 industrial control panel facility
- All ASME code section 9 welders
- OSHA compliant safety program
- In depth quality assurance program
- NIST traceable & calibrated test facility
- Certificate of product liability insurance
- Single source system warranty

Manufactured and tested packaged pump systems by **TIGERFLOW** provide critical advantages for system owners, designers and contractors. Liability and performance risks are eliminated. System designers appreciate the time savings and **TIGERFLOW** expertise built into each project. The benefits of **TIGERFLOW** as a single source solution have been proven again and again in virtually all building applications, including: Commercial, Plumbing, Irrigation, Industrial, Municipal, Fire Protection, HVAC, Heat Transfer, and Hot Water Heating.

Each factory built **TIGERFLOW** system is tested to meet in-the-field operating specifications before shipment. That means each unit arrives on site meeting and/or exceeding all relevant industry standards, in addition to site performance specifications. On time, every time deliveries of third party certified systems eliminate contractor performance penalties and delays. **TIGERFLOW**'s expertise renders site-built/site-certified systems a thing of the past.

Our promise to you is simple: your **TIGERFLOW** factory engineered system will arrive ready to operate reliably, to required specifications, with the simplest of site installation.



Where every manufactured system is NIST factory tested to meet commercial, institutional, process and industrial standards.

TIGERFLOW Facility:

- 87,144 SQ. Ft. Facility on 6.2 Acres
- (3) Independent bridge cranes w. hoists
- Fully enclosed double door 16'W X 34'L X 16'H Paint/coating booth
- (6) Dock doors, 19'W X 17'H Ramp door
- Positioner
- Lathe
- UL/C-UL 508/918 Industrial Control Panel Facility
- All ASME Code Section 9 welders
- OSHA compliant safety program
- In depth quality assurance program
- Certificate of Product Liability insurance

IN HOUSE R&D, ENGINEERING.

- Degreed, Licensed P.E.s
- Auto-cad design, 3-D modeling
- In-house control programming
- Factory trained field service engineers & technicians

NIST Certified & Calibrated System Test Facility:

- Independently calibrated & traceable
- 10,000 + GPM, 8000 gallon NSF-61 coated test tank, 20", 12", 16", 3" Test loops
- Testing up to 1000 total connected HP
- Wire to water efficiency indication/testing
- X-Y System performance testing/test reports



TIGERFLOW is the preferred choice of system specifiers around the world, including but not limited to...

- | | | | | |
|---|---|---|---|---|
| <ul style="list-style-type: none"> • Gerald Hines • Trammell Crow • Burdenko Hospital Russia • Candler Hospital • Crawford Long Hospital • M.D. Anderson Cancer Research Centers • Mercy Hospital • San Antonio Heart Hosp • University of Houston Medical Center • Boeing • Boise Cascade • Coca Cola • Dell Computer | <ul style="list-style-type: none"> • Exxon/Mobile • Frito Lay • Founders Research Center II - Genentech • General Motors • Home Depot • Honda Transmission America • Internet Security Services • John Deere • Lucent Technologies • Pratt & Whitney Space Propulsion • Proctor and Gamble • Prudential-Woodbridge, NJ • Sunoco/Aristech Chemical • Tower Automotive • US Steel Lorain Pipe Mill | <ul style="list-style-type: none"> • Alaska Sports Authority • American Airline Center • Astro's Field/Union Station ML BP • Cleveland Brown's Stadium • Detroit Tiger's MLB Stadium • Philadelphia Phillies MLB BP • Pittsburgh Steelers's Stadium • Ram's Dome NFL Stadium • Barksdale AFB • Camp Smith Command HQ • Dept. of Justice Center • Eglin AFB • Bank of New York Data Center • Unalaska City School District | <ul style="list-style-type: none"> • Beau Rivage Casino • Caesar's • Green Valley Ranch Casino • Hard Rock Casino & Hotel • Harrah's • Hilton Casino • Orleans Casino • Raddison Cable Beach Resort • South Coast Casino • Tropicana Casino • ANDRX Pharmaceutical • Bristol Myers • Cardinal Health • Hoffman LaRoche • Merck | <ul style="list-style-type: none"> • Navartis • Smith Klein Beecham • Wyeth Lederly • Bethel WWTP • Blue Plains WWTP • Emergency Training Facility • Fermco /Fernald • First Brigade Afganistan • Granite View Booster Station • Kafrein Water Supply System • Kingston WWTP • Luttrell Blaine Utility District |
|---|---|---|---|---|



TIGERFLOW®
Engineered Systems to the World

4034 Mint Way • Dallas, TX 75237

(800) 783-6756

Tel: (214) 337-8780 • Fax: (214) 333-2742

www.TIGERFLOW.com

E-mail: sales@TIGERFLOW.com

REPRESENTED BY: